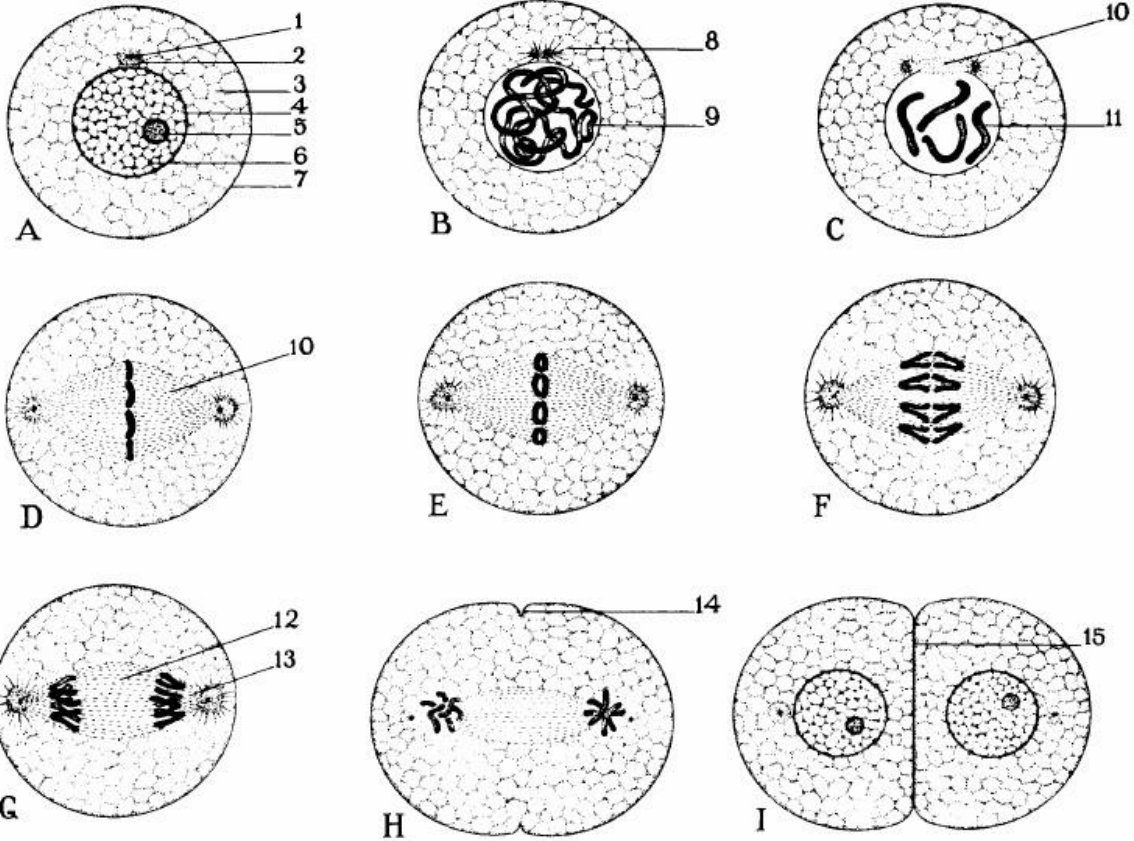


Animal Cell Types

Animal Mitosis



Stages:

- A. Resting cell (interphase)
- B. Early prophase
- C. Late prophase
- D. Metaphase, or equatorial plate stage
- E. Metaphase
- F. Early anaphase
- G. Late anaphase
- H. Telophase
- I. Late telophase, two new cells formed

Labels:

- 1. Centrosome
- 2. Centrosphere
- 3. Cytoplasm
- 4. Nuclear membrane
- 5. Nucleolus
- 6. Chromatin on lining network
- 7. Cell membrane

8. Astral ray

- 9. Spindle
- 10. Spindle
- 11. Chromosome
- 12. Central spindle fibers
- 13. Mantle fibers
- 14. New cell membrane forming
- 15. New cell membrane complete