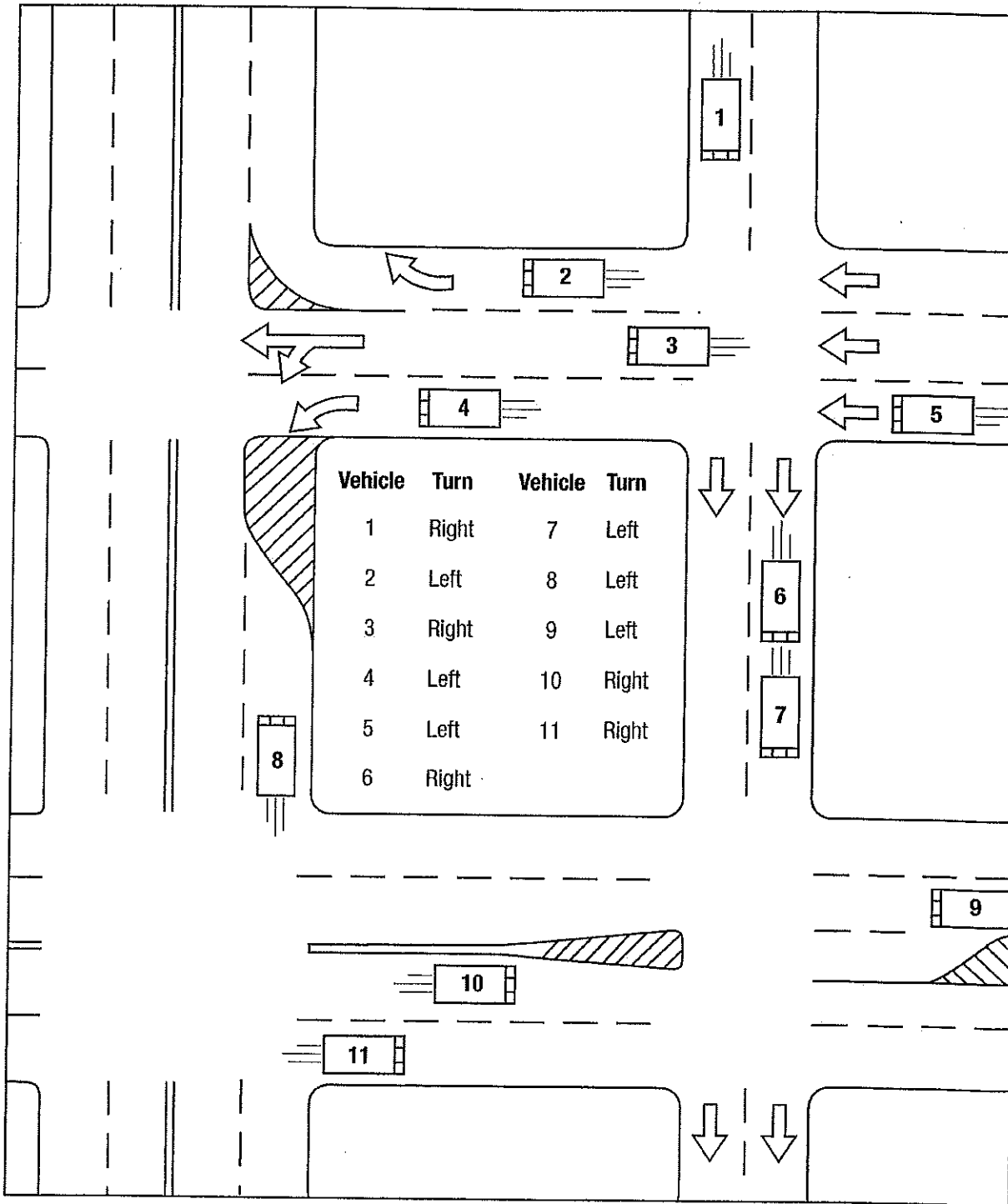


Completing Turns on One-Way Streets

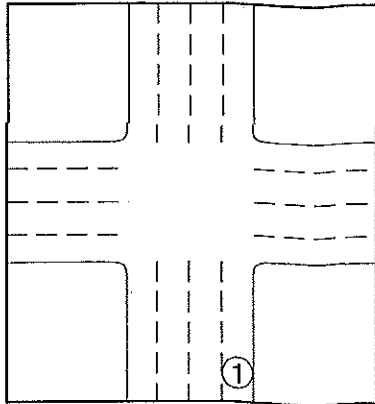
Several intersections involving one-way streets are shown below. Each vehicle is to make the turn described in the box in the center of the page. Draw a line with an arrow from each vehicle to show the safe path of travel for each turn. For each vehicle in this activity, assume that no other traffic is present.



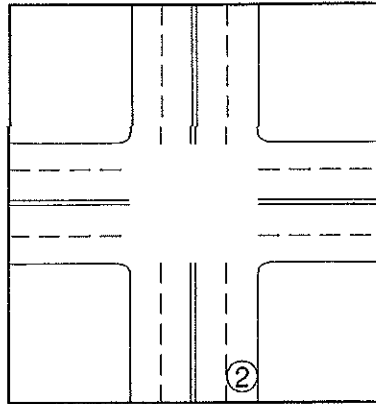
Copyright © by Pearson Education, Inc., or its affiliates. All rights reserved.

Choosing the Correct Turn

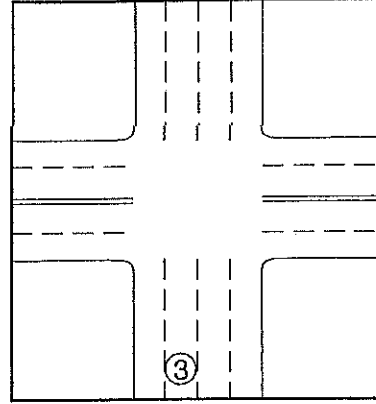
The intersections shown below have two-way streets, one-way streets, or combinations of both. Select the correct path of travel for the turn described under each picture. Draw a line with an arrow from the circled number to the location where you would finish the turn. Be sure to consider lane lines and markings that indicate a two-way or one-way street.



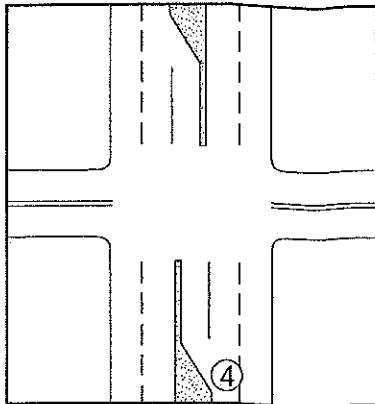
Make a right turn.



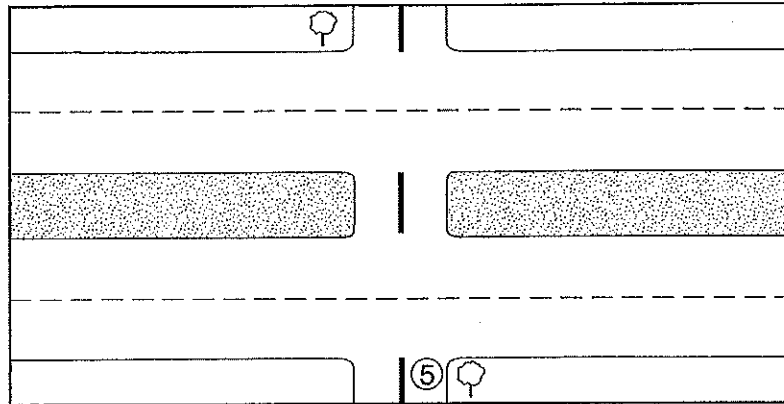
Make a left turn.



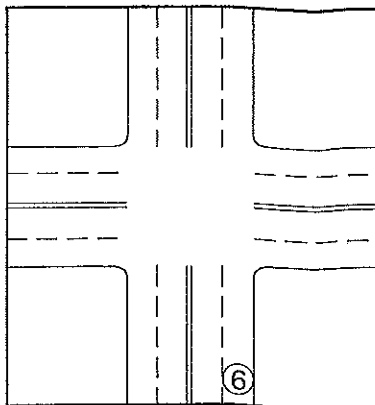
Make a left turn.



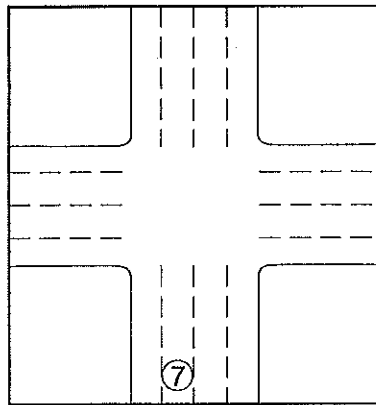
Make a left turn.



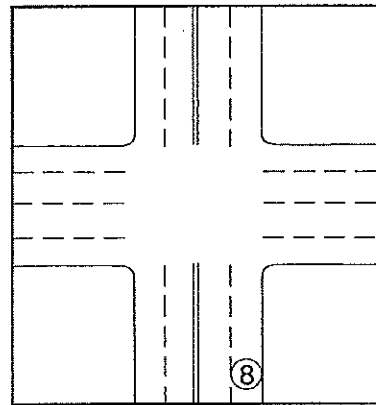
Make a left turn.



Make a right turn.



Make a left turn.



Make a left turn.

Copyright © by Pearson Education, Inc., or its affiliates. All rights reserved.