

Pick a Word

Use the word or words in the box below that matches each statement.

accelerator pedal	hazard flasher control
Antilock Braking System light	head restraint
brake pedal	hood-release lever
clutch	odometer
cruise control	shift indicator

- _____ 1. This indicates the antilock braking system is functioning.
- _____ 2. This optional device allows you to set a constant speed in your vehicle.
- _____ 3. The driver controls the speed of the vehicle with this device.
- _____ 4. This padded safety device helps reduce whiplash injuries in a collision.
- _____ 5. Use this device to warn other drivers of a vehicle breakdown or problem.
- _____ 6. You must have your foot on this device when shifting from parking gear to a driving gear.
- _____ 7. This gauge on the instrument panel shows the number of miles a vehicle has been driven.
- _____ 8. You must use this device before checking or replacing any engine fluids.
- _____ 9. This device allows the driver to change gears when driving a vehicle with a manual transmission.
- _____ 10. This device indicates the gear being used by the driver or the need to change to a higher gear.

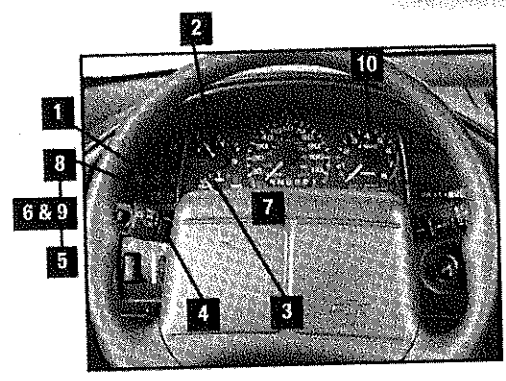
Write the Basic Vehicle Operation Term

Write the terms for the definitions below on the blank lines provided.

- _____ 1. The point at which the brakes begin to slow the vehicle
- _____ 2. An area that may not be visible to the driver when looking in the rearview or sideview mirrors
- _____ 3. Effectively using vision and a comfortable and balanced hand position to point the vehicle in the direction you want to drive
- _____ 4. Looking far ahead in the middle of your intended path of travel
- _____ 5. In a vehicle without ABS, when the brakes are applied with such force that the wheels stop turning and the tires begin to slide on the pavement

Write the Warning Information

The names of critical instrument panel warning lights and gauges (as shown in the picture) appear below. Fill in the vehicle information the driver receives from each device.



1. Safety belt alert light: _____
2. Fuel gauge: _____
3. Temperature warning light or gauge (H): _____
4. Oil pressure warning light: _____
5. Air bag warning light: _____
6. Parking brake warning light: _____
7. Left and right signals flashing: _____
8. ABS alert light: _____
9. Brake system warning light: _____
10. Tachometer: _____

Test Your Knowledge

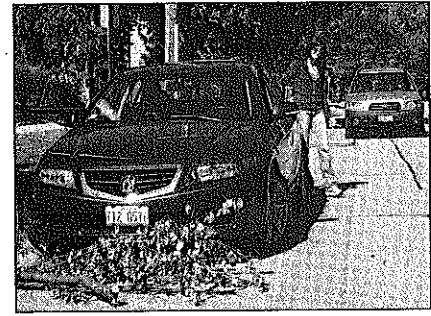
Check correct or incorrect for each statement below.

1. When the oil pressure warning light goes on with the engine running, it indicates that the oil needs changing.
2. The last thing you should do before moving a vehicle away from the curb is release the parking brake.
3. The ABS alert light indicates a problem with the antilock braking system if it comes on while you are driving.
4. If the brake warning light comes on as you apply the foot-brake pedal, it indicates that the brake pads are worn out.
5. In an automatic transmission vehicle, always come to a stop before changing from DRIVE to REVERSE or OVERDRIVE to PARK gears.
6. It will be easier to learn good manual transmission skills after you learn basic vehicle maneuvers.
7. A driver has less control over the power applied in a vehicle with a manual transmission.
8. The driver can start the vehicle in NEUTRAL or PARK gears, regardless of the transmission type.
9. Beginning drivers often try to correct steering errors by moving the steering wheel too much and looking where the car is going.
10. The windshield wipers and washer usually are operated by a switch mounted on the turn-signal lever.

	Correct	Incorrect
1.		
2.		
3.		
4.		
5.		
6.		
7.		
8.		
9.		
10.		

Use the Picture

Use the picture at the right to answer the vehicle control procedures questions below.



1. What error is this person making in approaching and entering this vehicle? _____

2. Why is the correct procedure a safer way to enter?

3. What outside checks should this person make?

Exiting the Vehicle

Number the following steps that a driver should complete when leaving a vehicle from the driver's side.

- | | |
|------------------------------------|---------------------------------------|
| _____ check for traffic | _____ set the parking brake |
| _____ close the windows | _____ shift to PARK |
| _____ lock the door | _____ turn off the headlights |
| _____ take your foot off the brake | _____ turn off the ignition |
| _____ open the door and exit | _____ walk to the rear of the vehicle |

Identify the Gear

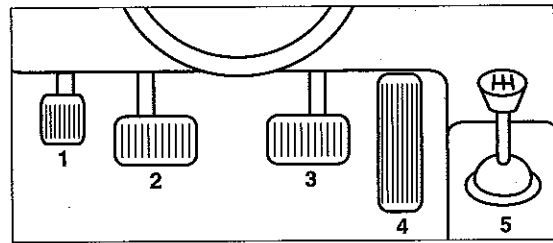
For each situation listed, check the gear that you should use on an automatic transmission vehicle to complete the maneuver.

1. Backing out of a parking space
2. Driving on an open, level highway
3. Leaving the vehicle in a garage
4. Pulling a heavy load or driving down a very steep hill
5. Driving in the city in moderate snow conditions
6. Restarting the vehicle while moving forward
7. Reducing speed on a low-traction surface prior to making a turn at an intersection

	P	R	N	D	L2	L1
1.						
2.						
3.						
4.						
5.						
6.						
7.						

Use the Picture

Study the controls in the picture to the right and read each driver action below. Write in the boxes the number and name of the control to use.



1. In a manual transmission vehicle, the driver must push this pedal when stopping and changing gears.
2. The driver must use these devices to change gears.
3. The driver must use this device to slow or stop the vehicle.
4. The driver must use this device when preparing to leave the vehicle.
5. The driver must use this pedal to increase speed or change speed of the engine.

	Number	Name
1.		
2.		
3.		
4.		
5.		

Answer the Question

Use the word or words in the box that best answer the questions below.

brake pedal	OVERDRIVE
clutch	PARK
DRIVE	REVERSE
lower gears	semi-automatic transmission
NEUTRAL	

1. When slowing before a sharp turn, what pedal can you use to gain added control?
2. Which gear would you use to move forward from a stop?
3. Which gear would you use to back out of a garage?
4. Your vehicle allows you to shift gears manually without the use of a clutch. What kind of transmission do you have?
5. You are towing a heavy trailer. What gear(s) can you use to send more power to your wheels?
6. What gear locks the transmission?
7. Your engine stalls while you are driving. To what gear should you shift?
8. What gear can be used for forward driving, but also saves fuel?
9. You are slowing your vehicle from higher speeds. What vehicle-control device would you use?
10. You are changing gears or slowing your vehicle from slow speeds in a manual transmission. What vehicle-control device would you use?

1. _____
2. _____
3. _____
4. _____
5. _____
6. _____
7. _____
8. _____
9. _____
10. _____